



TSA **TECNOLOGIE
SPECIALI
APPLICATE**

ACCESSORIES



**AIR
TREATMENT UNITS**

INDICE

TSA	
Tecnologie speciali applicate	2
GRUPPI TRATTAMENTO ARIA	4
VALVOLE DI COMANDO MANUALE O PNEUMATICO	5
SILENZIATORI	6
FILTRO DISOLEATORE/SILENZIATORE	7
I NOSTRI PRODOTTI	8

TSA

SPECIAL APPLIED TECHNOLOGIES

TSA founded in 1984, for over 30 years has been designing, manufacturing and distributing pneumatic motors, articulated arms for torque reaction, assembling systems and special equipment.

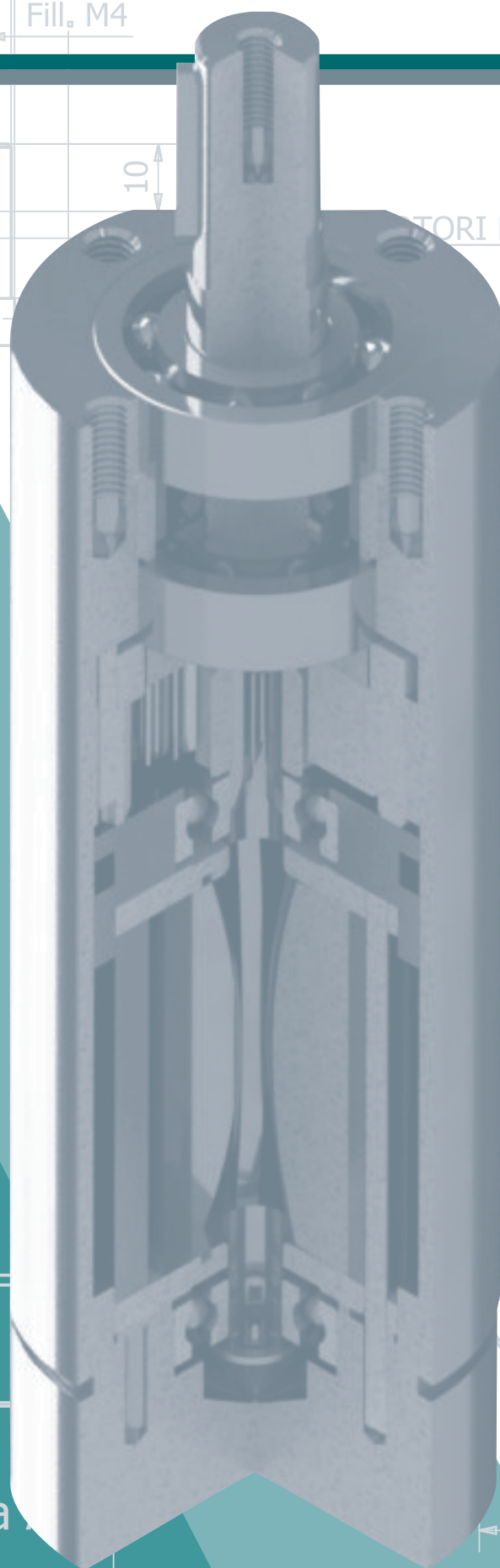
Its technical design office is in charge of studying all of the required characteristics to guarantee maximum reliability and high productivity, according to modern ergonomic principles. Product quality and safety are now a consolidated standard for TSA.

Just-in-time deliveries, a wide, flexible range of products, including diversified motors and arms, an efficient spare parts warehouse and effective before- and after sales: these are the services offered by TSA to its customers. Thanks to its constant commitment and to the professionalism of its technicians,

TSA has gained the trust of major companies on the market. Its aim is to meet customer requirements in all respects: **QUALITY, PERFORMANCE AND COST EFFECTIVENESS.**

Vista

Ø42



PNEUMATIC ACCESSORIES

TSA offers a pneumatic component programme for air treatment and control of pneumatic motors on premium brands, including **SMC, BOSCH, NORGREN, WILKERSON**. This programme consists of air treatment units, valves and silencers. The available connections range from G1/4" to G2".



per rotazione destrorsa
per rotazione sinistrorsa

VERSIBILI



AIR TREATMENT UNITS

All of the filters used have automated condensation discharge, the FRL units are installation-ready and fitted with a pressure gauge.

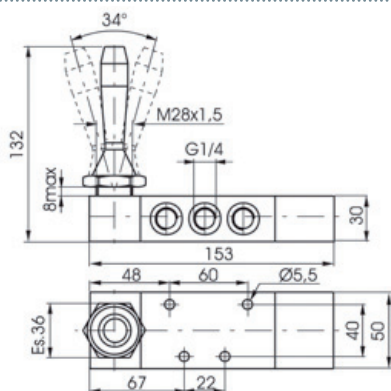
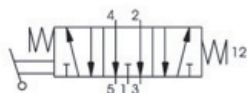
Models	TFRL3/8	TFRL1/2	TFRL3/4	TFRL1	TFRL2
Connection	3/8"	1/2"	3/4"	1"	2"
Max. operating pressure	10 Bar	10 Bar	10 Bar	10 Bar	20 Bar
Max. operating temperature	-5 a +60°C				
Standard filtration rate	8 Micron				
Flow rate in l/sec	56,6	63,2	67,5	149	660



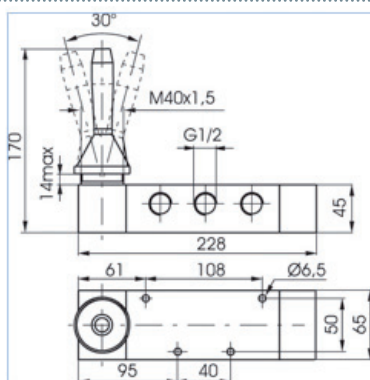
MANUAL OR PNEUMATIC CONTROL VALVES

Easy and quick to install, the default valves fitted on TSA pneumatic motors are 5-way 3-position valves with centres open in idle position, with lever or pneumatic control.

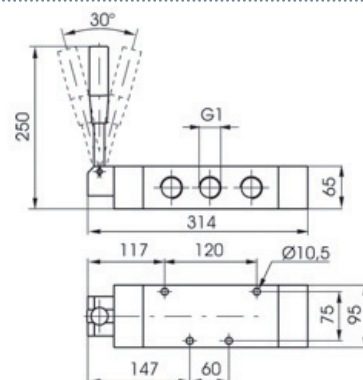
Models	VCM1/4	VCM1/2	VCM1	VCP1/4	VCP1/2	VCP1
Connection	G1/4"	G1/2"	G1"	G1/4"	G1/2"	G1"
Fluid	Aria filtrata e lubrificata					
Max pressure operating	10 bar					
Temperature	-5°C +70°C					
Flow rate at 6 bar with $\Delta p = 1 \text{ NI} / \text{min}$	1280	3500	6500	1280	3000	6500
Ø Nominal passage	8mm	15mm	20mm	8mm	15mm	20mm
Body material	Alluminio					
Kg.	0,7	2	5	0,6	1,7	4,2
Minimum pilot pressure	-	-	-	3 bar	3 bar	3 bar
Pilot connection	-	-	-	G1/8"	G1/8"	G1/8"



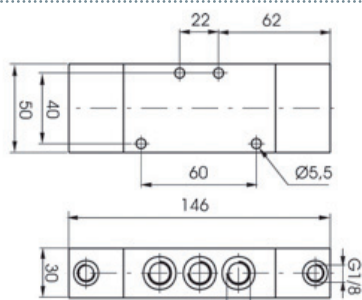
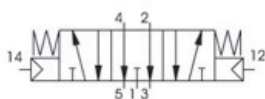
VCM1/4



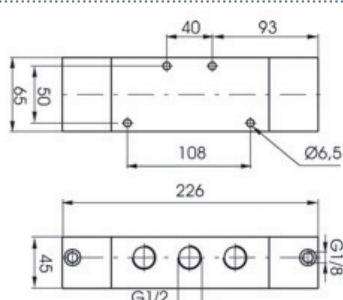
VCM1/2



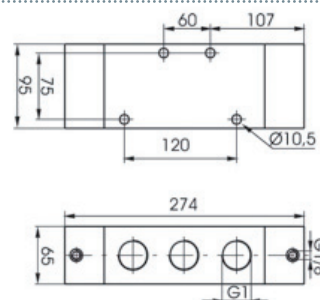
VCM1



VCP1/4



VCP1/2



VCP1

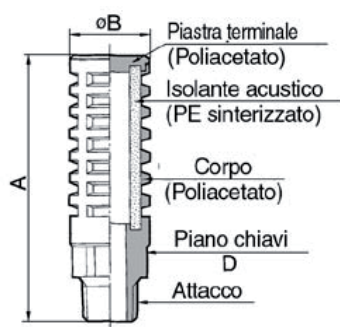
SILENCERS

All motors are fitted with a threaded exhaust gate, which makes it possible to add a silencer in order to reduce the noise level. It is also possible to add another hose between exhaust and silencer which will further reduce the noise level.

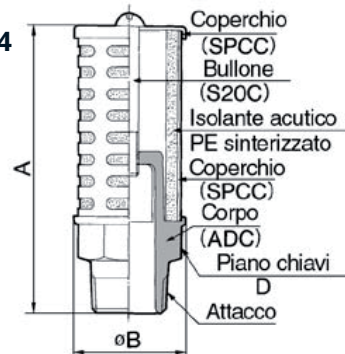


Models	S1/4	S3/8	S1/2	S3/4	S1	S1 1/4
Connection	1/4 NPT	3/8 NPT	1/2 NPT	3/4 NPT	1 NPT	1 1/4 NPT
Noise dB reduction	>30 dB(A)					
Fluid	Compressed air					
Operating temperature	+5° C – 60° C					
Body	Plastic	Plastic	Plastic	Steel + Plastic	Steel + Plastic	Steel + Plastic

Dimensions S1/4 – S1/2



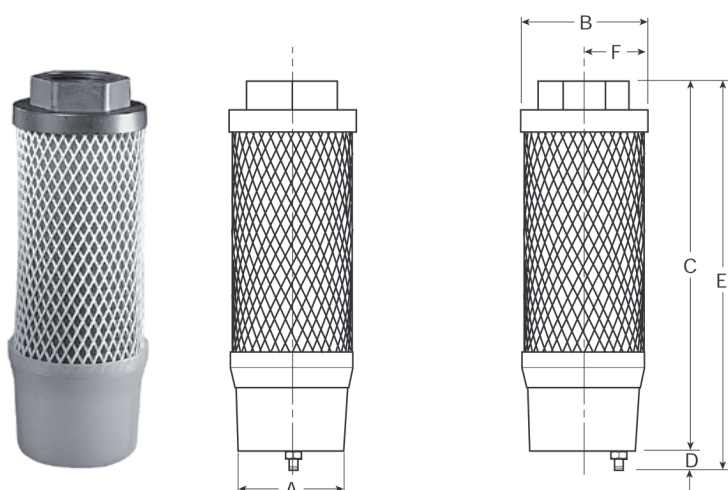
Dimensions S3/4 – S1 1/4



Dimensions	S1/4	S3/8	S1/2	S3/4	S1	S1 1/4
A	63	84	92	107	127	186
B	22	25	30	46	50	74
D	19	22	27	36	41	50

DISSOLATOR / SILENCER FILTER

Models	XMC-C4-000	XMC-C8-000	XMC-CB-000	S3/4	S1	S1 1/4
Connection	½ G	1 G	1 - 1/2 G	107	127	186
Bath capacity	2.2 fl. oz.	5 fl. oz.	5 fl. oz.	46	50	74
Drain	Manuale	22	27	36	41	50
oiling	99.9%					
Operating temperature	2° C – 50° C					
Sound reduction	25 dB(A)					
Kg.	0.4					



CONSTRUCTION MATERIALS

Threaded cover	Nylon
Filter element	
Primary	borosilicate cloth
Secondary	PVC fiber
Oil cover of waste	Plastic
Sleeve support	Plastic

Model	A	B	C	D	E	F
XMC-C4-000	51	60	100	10	150.9	30
XMC-C8-000	51	60	148	10	198.9	30
XMC-CB-000	76	87	208	11	284	-

PNEUMATIC MOTORS



GEAR-MOTORS



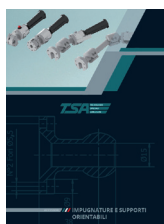
TELESCOPIC BOOMS

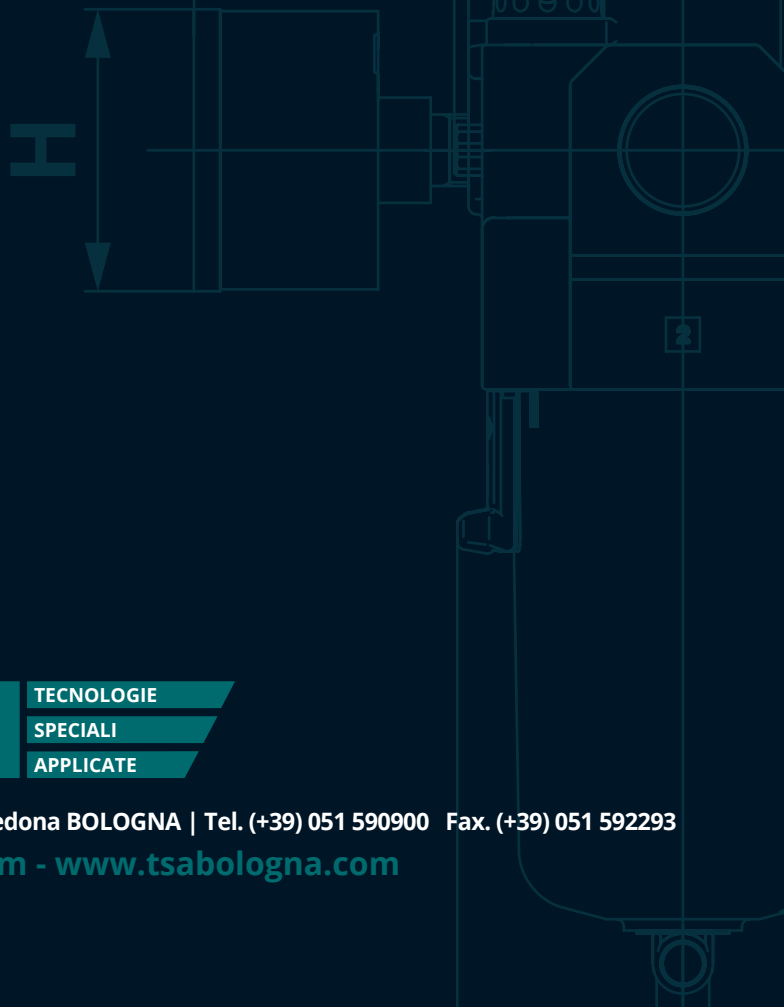
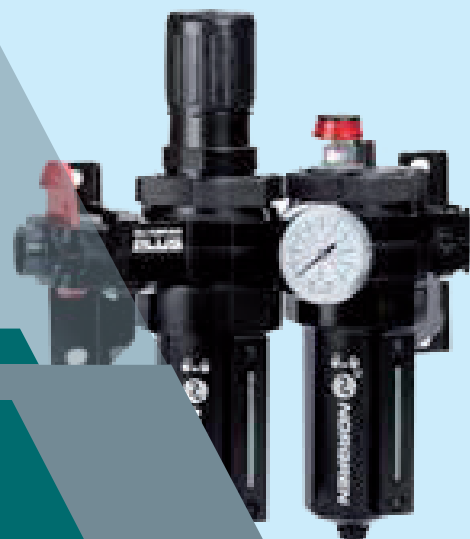


ARTICULATED BOOMS



ACCESSORIES





Tecnologie Speciali Applicate Srl | Via Calari 16,40069 | Zola Predona BOLOGNA | Tel. (+39) 051 590900 Fax. (+39) 051 592293

E-mail: tsa@tsabologna.com - www.tsabologna.com