

# MP165 - HP 2,3 KW 1,6



## PERFORMANCES AND DIMENSIONS

	8 bar			7 bar			6 bar			5 bar			4 bar			3 bar		
	Couple Min. Of cue Nm	Couple Max. of cue Nm	Couple Stall Nm	Couple Min. Of cue Nm	Couple Max. of cue Nm	Couple Stall Nm	Couple Min. Of cue Nm	Couple Max. of cue Nm	Couple Stall Nm	Couple Min. Of cue Nm	Couple Max. of cue Nm	Couple Stall Nm	Couple Min. Of cue Nm	Couple Max. of cue Nm	Couple Stall Nm	Couple Min. Of cue Nm	Couple Max. of cue Nm	Couple Stall Nm
	8,82	13,72	12,74	7,84	11,76	10,78	5,88	9,80	8,82	4,90	7,84	6,86	3,92	5,88	5,88	2,94	3,92	3,92
Speed Giri/1'	Power HP	Couple Max Power Nm	Consumption l/sec	Power HP	Couple Max Power Nm	Consumption l/sec	Power HP	Couple Max Power Nm	Consumption l/sec	Power HP	Couple Max Power Nm	Consumption l/sec	Power HP	Couple Max Power Nm	Consumption l/sec	Power HP	Couple Max Power Nm	Consumption l/sec
2400	2,3	6,86	36	1,9	5,88	32	1,5	3,92	27	1,0	2,94	23	0,6	1,96	18	0,2	0,98	14
2200	2,3	6,86	34	1,9	5,88	29	1,5	4,90	25	1,1	2,94	21	0,7	1,96	17	0,3	0,98	13
2000	2,2	7,84	31	1,8	6,86	27	1,5	4,90	23	1,1	3,92	19	0,7	1,96	15	0,3	0,98	12
1800	2,1	7,84	28	1,8	6,86	24	1,4	5,88	21	1,1	3,92	18	0,7	2,94	14	0,3	0,98	11
1600	2,0	8,82	25	1,7	6,86	22	1,3	5,88	19	1,0	4,90	16	0,7	2,94	13	0,4	1,96	10
1400	1,8	8,82	22	1,5	7,84	20	1,3	5,88	17	1,0	4,90	14	0,7	2,94	11	0,4	1,96	9
1200	1,7	9,80	20	1,4	7,84	17	1,1	6,86	15	0,9	4,90	12	0,6	3,92	10	0,4	1,96	8
1000	1,4	9,80	17	1,2	8,82	15	1,0	6,86	13	0,8	5,88	11	0,6	3,92	9	0,3	1,96	6
800	1,2	10,78	14	1,0	8,82	12	0,8	7,84	11	0,7	5,88	9	0,5	3,92	7	0,3	2,94	5
600	0,9	10,78	11	0,8	9,80	10	0,7	7,84	8	0,5	5,88	7	0,4	4,90	6	0,3	2,94	4
400	0,7	11,76	8	0,6	9,80	7	0,5	7,84	6	0,4	6,86	5	0,3	4,90	4	0,2	2,94	3

### AVAILABLE VERSIONS

- MP165F** flanged
- MP165FV** flanged with control
- MP165P** on base
- MP165PV** on base with control
- MP165BR** Motor with pneumatic brake BR110

**Lubrication:** 3-4 drops/1' continuous operation  
6-10 drops/1' intermittent operation  
Horizontal 75 ml Vertical 150 ml.

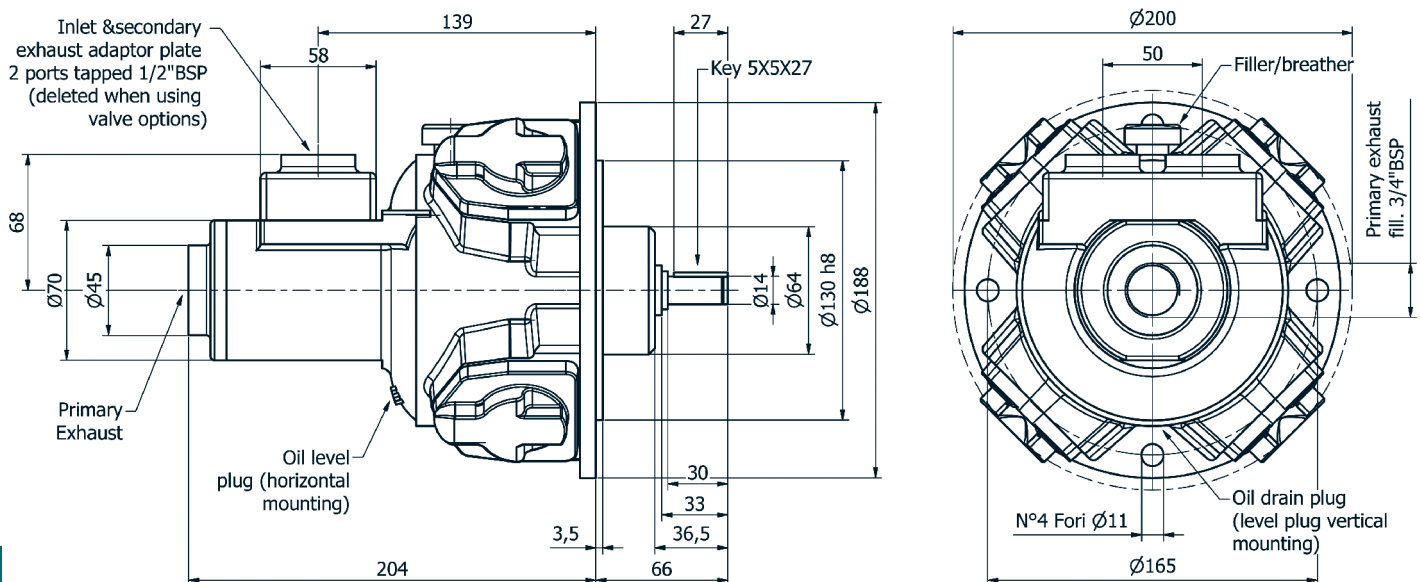
**Filtration:** 64 μ or better

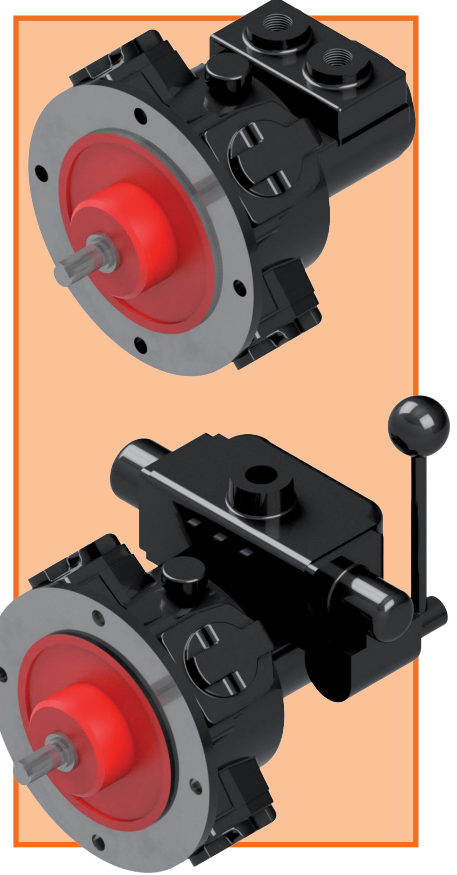
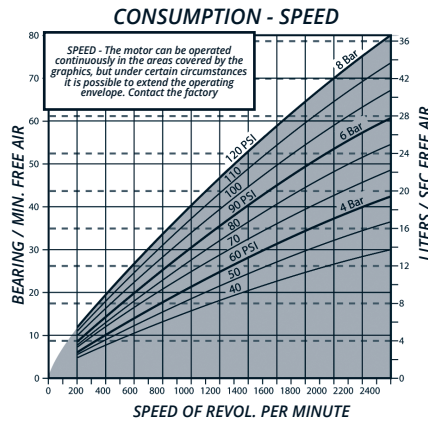
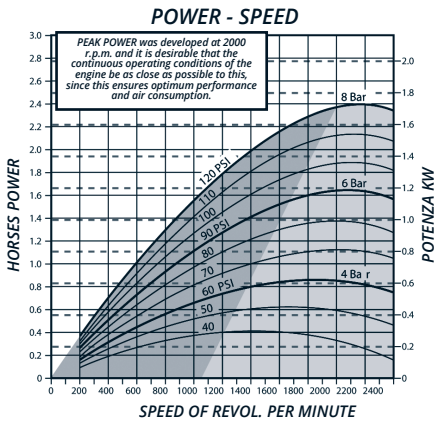
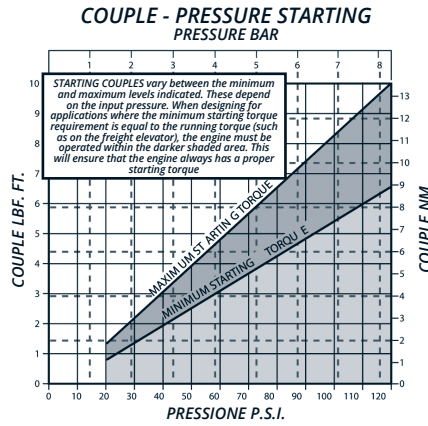
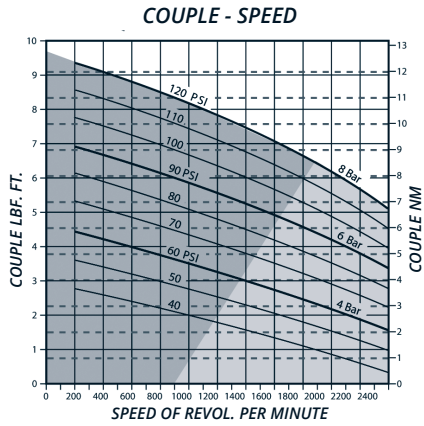
**Radial load:** 445 N max.

**Moment of inertia:** 0,01 g.m

**Operative temperature:** da -20°C a +80°C

**Weight (version MP165):** Kg.13





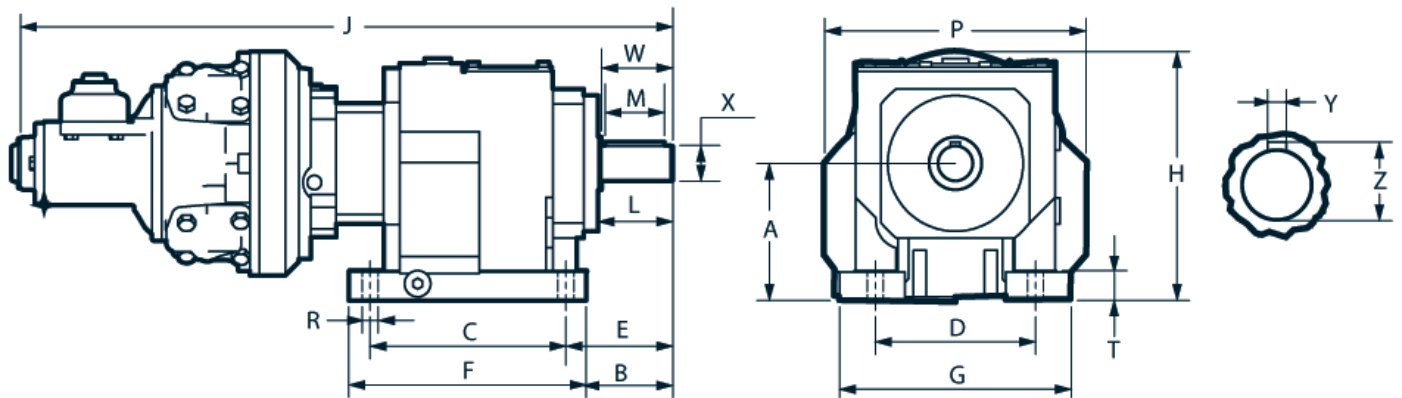
**PNEUMATIC RADIAL PISTON GEARED MOTORS**

The performance shown below was measured at a pressure of 6 bar. For higher pressures contact TSA. For additional models and reports contact TSA.

Rapport reduction	Conditions at maximum power			Couple min. of cue	Weight Kg			
	kw	hp	Giri/1'		Gear	Adapter	Motor & gear	
				Couple				Nm
4,77	1,2	1,6	440	23	Nm	15.5	4.5	33
24,50	1,2	1,6	86	122	146	15.5	4.5	33
50	1,2	1,6	42	250	300	26	4.5	43.5
73,30	1,2	1,6	29	366	439	45	4.5	62.5
104,80	1,2	1,6	20	524	629	45	4.5	62.5
129,79	1,2	1,6	16	649	779	79	4.5	96.5
155,46	1,2	1,6	14	777	932	79	4.5	96.5
175,18	1,2	1,6	12	876	1051	79	4.5	96.5
213,64	1,2	1,6	10	1068	1282	79	4.5	96.5
256,86	1,2	1,6	8	1284	1541	129	4.5	146.5

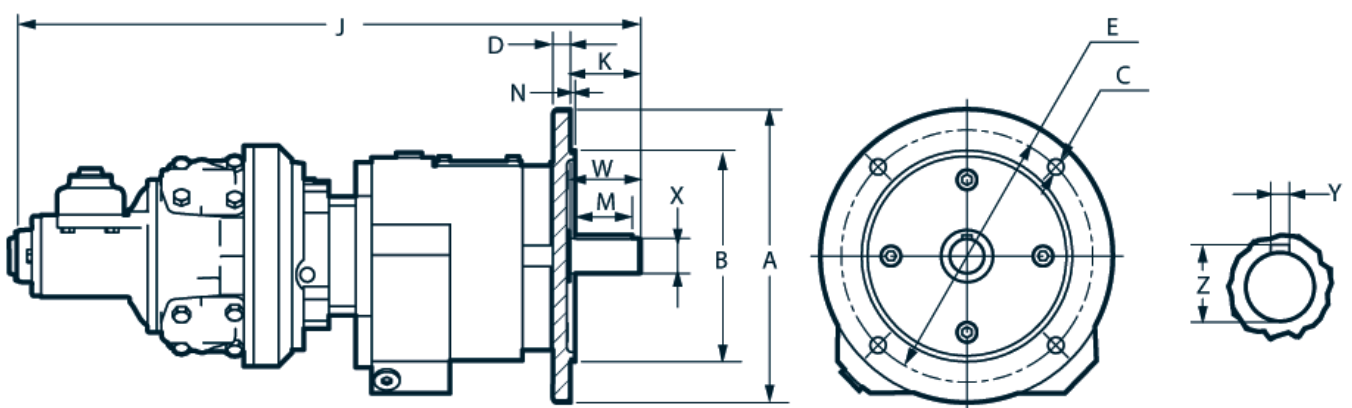
Detailed drawings and CAD models are available on request.

## GEAR-MOTOR WITH BASE



Rapport	A	B	C	D	E	F	G	H	J	L	M	P	R	T	W	X	Y	Z	Weight Kg.
4.77-24.5:1	90+4	60	130	110	75	160	145	184+4	495	53	40	188	9.8	20	50	25	8	28	33
27-56:1	115	75	165	135	90	200	195	209	532	63	50	220	13.5	25	60	30	8	33	42
56-61:1	115	75	165	135	90	200	195	209	532	63	50	220	13.5	25	60	30	8	33	43.5
60-88.59:1	140	95	205	170	115	245	235	290	601	84	70	263	17.5	30	80	40	12	43	62.5

## GEAR-MOTOR FLANGED



Rapport	A	B	C	D	E	J	K	M	N	W	X	Y	Z	Weight Kg.
4.77-24.5:1	200	130	11	12	165	495	50	40	3.5	50	25	8	28	33
27-56:1	250	180	13.5	15	215	532	60	50	4	60	30	8	33	42
56-61:1	250	180	13.5	15	215	532	60	50	4	60	30	8	33	43.5
60-88.59:1	300	230	13.5	16	265	610	80	70	4	80	40	12	43	62.5