



PERFORMANCES AND DIMENSIONS

| Speed Giri/1' | 8 bar | | | 7 bar | | | 6 bar | | | 5 bar | | | 4 bar | | | 3 bar | | |
|------------------|-----------------------------------|-----------------------------------|-----------------------|-----------------------------------|-----------------------------------|-----------------------|-----------------------------------|-----------------------------------|-----------------------|-----------------------------------|-----------------------------------|-----------------------|-----------------------------------|-----------------------------------|-----------------------|-----------------------------------|-----------------------------------|-----------------------|
| | Couple Min. Of cue Nm | Couple Max. of cue Nm | Couple Stall Nm | Couple Min. Of cue Nm | Couple Max. of cue Nm | Couple Stall Nm | Couple Min. Of cue Nm | Couple Max. of cue Nm | Couple Stall Nm | Couple Min. Of cue Nm | Couple Max. of cue Nm | Couple Stall Nm | Couple Min. Of cue Nm | Couple Max. of cue Nm | Couple Stall Nm | Couple Min. Of cue Nm | Couple Max. of cue Nm | Couple Stall Nm |
| | 26,46 | 49,98 | 36,26 | 23,52 | 43,12 | 31,36 | 19,60 | 37,24 | 26,46 | 15,68 | 30,38 | 21,56 | 12,74 | 23,52 | 16,66 | 8,82 | 17,64 | 10,78 |
| Power HP | Couple Max Power Nm | Consumption l/sec | Power HP | Couple Max Power Nm | Consumption l/sec | Power HP | Couple Max Power Nm | Consumption l/sec | Power HP | Couple Max Power Nm | Consumption l/sec | Power HP | Couple Max Power Nm | Consumption l/sec | Power HP | Couple Max Power Nm | Consumption l/sec | |
| 2400 | 4,7 | 13,72 | 110 | 4,0 | 11,76 | 96 | 3,2 | 9,80 | 83 | 2,5 | 6,86 | 69 | 1,7 | 4,90 | 56 | 1,0 | 2,94 | 42 |
| 2200 | 4,9 | 15,68 | 102 | 4,1 | 12,74 | 90 | 3,4 | 10,78 | 77 | 2,6 | 8,82 | 64 | 1,9 | 5,88 | 52 | 1,1 | 3,92 | 39 |
| 2000 | 5,0 | 17,64 | 95 | 4,2 | 14,70 | 83 | 3,5 | 11,76 | 71 | 2,7 | 9,80 | 59 | 2,0 | 6,86 | 47 | 1,2 | 3,92 | 36 |
| 1800 | 5,0 | 19,60 | 87 | 4,2 | 16,66 | 76 | 3,5 | 13,72 | 65 | 2,8 | 10,78 | 54 | 2,0 | 7,84 | 43 | 1,3 | 4,90 | 33 |
| 1600 | 4,9 | 21,56 | 79 | 4,1 | 18,62 | 69 | 3,4 | 14,70 | 59 | 2,7 | 11,76 | 49 | 2,0 | 8,82 | 39 | 1,3 | 5,88 | 29 |
| 1400 | 4,6 | 23,52 | 71 | 4,0 | 19,60 | 62 | 3,3 | 16,66 | 53 | 2,6 | 12,74 | 44 | 1,9 | 9,80 | 35 | 1,3 | 5,88 | 26 |
| 1200 | 4,3 | 25,48 | 64 | 3,7 | 21,56 | 56 | 3,1 | 17,64 | 47 | 2,4 | 14,70 | 39 | 1,8 | 10,78 | 31 | 1,2 | 6,86 | 23 |
| 1000 | 3,9 | 27,44 | 56 | 3,3 | 23,52 | 49 | 2,8 | 19,60 | 41 | 2,2 | 15,68 | 34 | 1,7 | 11,76 | 27 | 1,1 | 7,84 | 20 |
| 800 | 3,3 | 29,40 | 48 | 2,8 | 24,50 | 42 | 2,4 | 20,58 | 36 | 1,9 | 16,66 | 29 | 1,4 | 12,74 | 23 | 1,0 | 8,82 | 17 |
| 600 | 2,6 | 30,38 | 40 | 2,3 | 26,46 | 35 | 1,9 | 22,54 | 30 | 1,5 | 17,64 | 24 | 1,1 | 13,72 | 19 | 0,8 | 8,82 | 14 |
| 400 | 1,9 | 32,34 | 33 | 1,6 | 28,42 | 28 | 1,3 | 23,52 | 24 | 1,1 | 18,62 | 19 | 0,8 | 14,70 | 15 | 0,6 | 9,80 | 10 |

AVAILABLE VERSIONS

- MP400F** flanged
- MP400FV** flanged with control
- MP400P** on base
- MP400PV** on base with control
- MP400BR** Motor with pneumatic brake BR210

Lubrication: 3-4 drops/1' continuous operation
6-10 drops/1' intermittent operation
Horizontal 330 ml Vertical 450 ml.

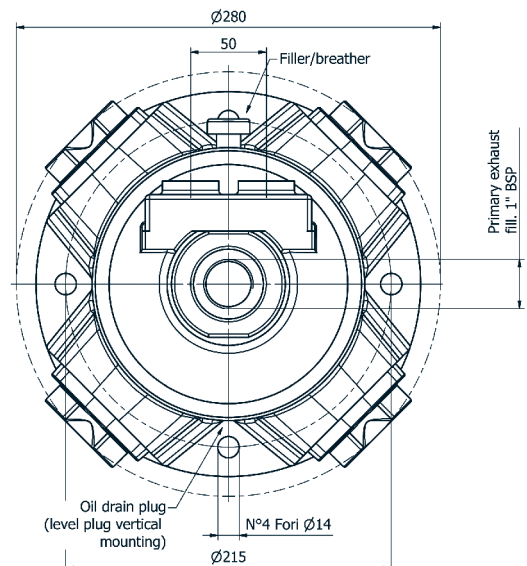
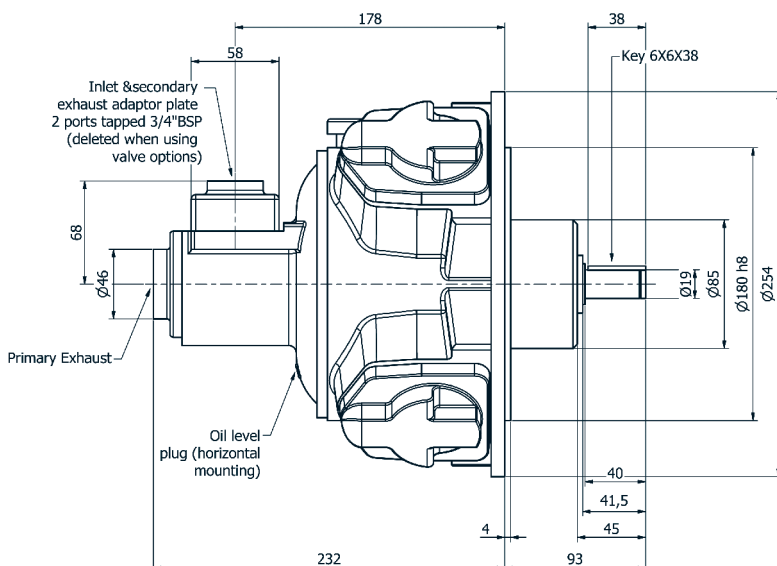
Filtration: 64 µ or better

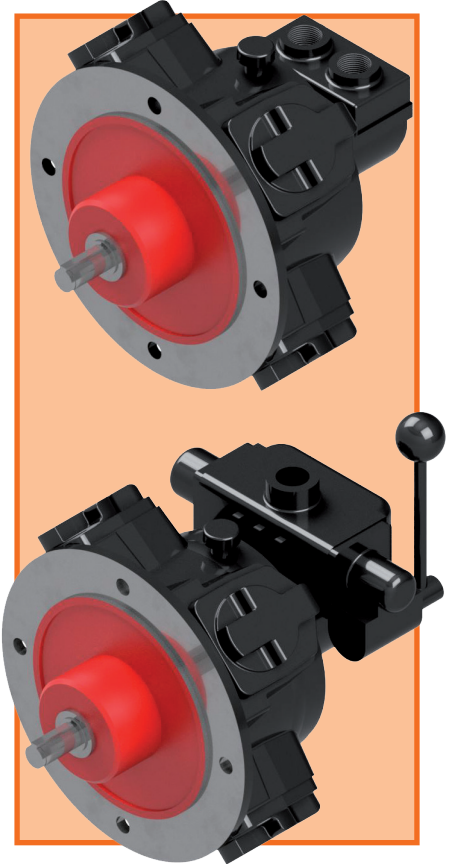
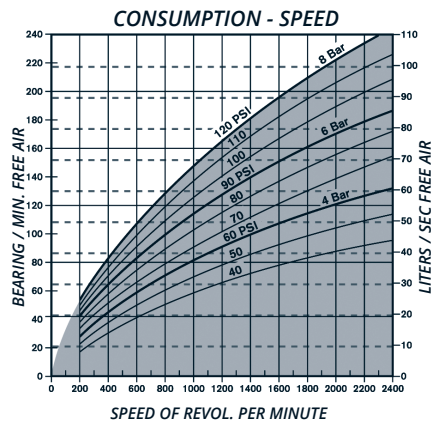
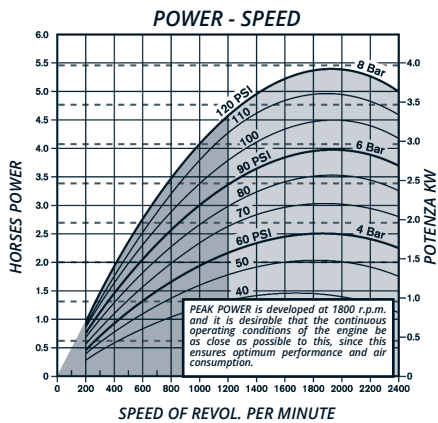
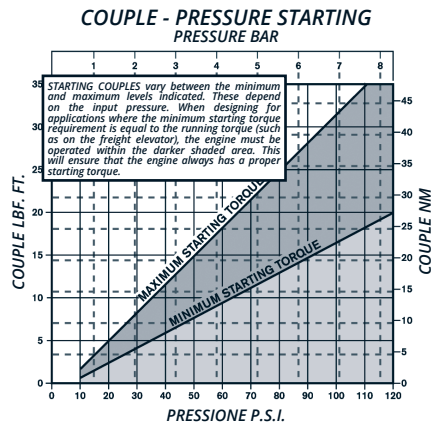
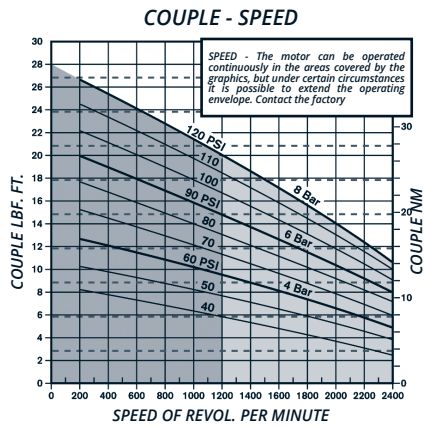
Radial load: 890 N max.

Moment of inertia: 0,56 g.m

Operative temperature: da -20°C a +80°C

Weight (version MP165): Kg.26





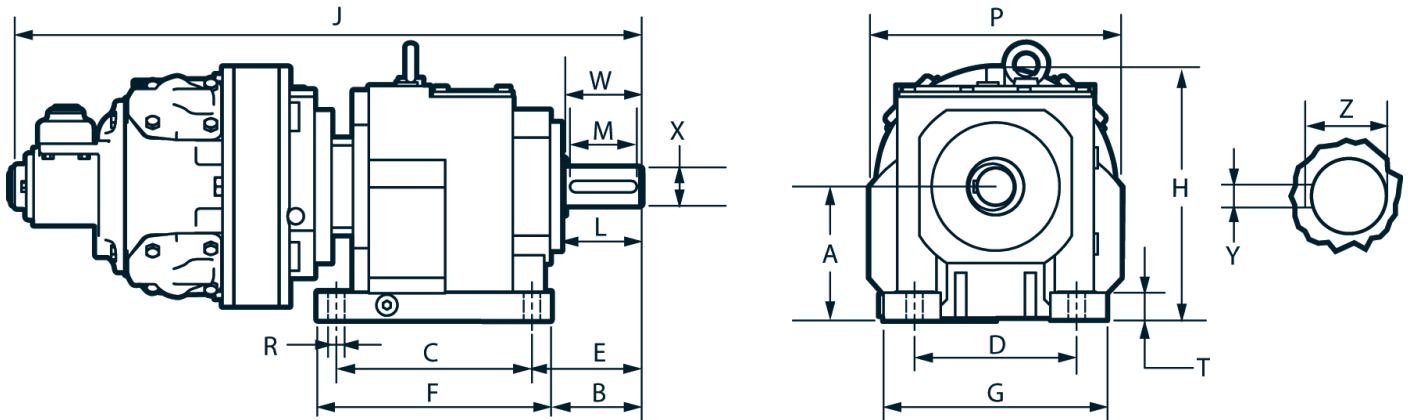
PNEUMATIC RADIAL PISTON GEARED MOTORS

The performance shown below was measured at a pressure of 6 bar. For higher pressures contact TSA. For additional models and reports contact TSA.

| Rapport reduction | Conditions at maximum power | | | Couple | Couple min. of cue | Weight Kg | | |
|-------------------|-----------------------------|----|---------|--------|--------------------|-----------|---------|--------------|
| | kw | hp | Giri/1' | | | Gear | Adapter | Motor & gear |
| | | | | Nm | Nm | | | |
| 5.15 | 3 | 4 | 369 | 77 | 93 | 30 | 10 | 66 |
| 25.55 | 3 | 4 | 74 | 383 | 460 | 47 | 10 | 83 |
| 49.42 | 3 | 4 | 38 | 741 | 890 | 79 | 10 | 115 |
| 74.88 | 3 | 4 | 25 | 1123 | 1348 | 79 | 10 | 115 |
| 105.08 | 3 | 4 | 18 | 1576 | 1891 | 129 | 10 | 165 |
| 126.90 | 3 | 4 | 15 | 1904 | 2284 | 129 | 10 | 165 |
| 148.99 | 3 | 4 | 13 | 2235 | 2682 | 194 | 10 | 230 |
| 171.62 | 3 | 4 | 11 | 2574 | 3089 | 194 | 10 | 230 |
| 201.22 | 3 | 4 | 9 | 3018 | 3622 | 194 | 10 | 230 |
| 254.70 | 3 | 4 | 7 | 3821 | 4585 | 312 | 10 | 348 |

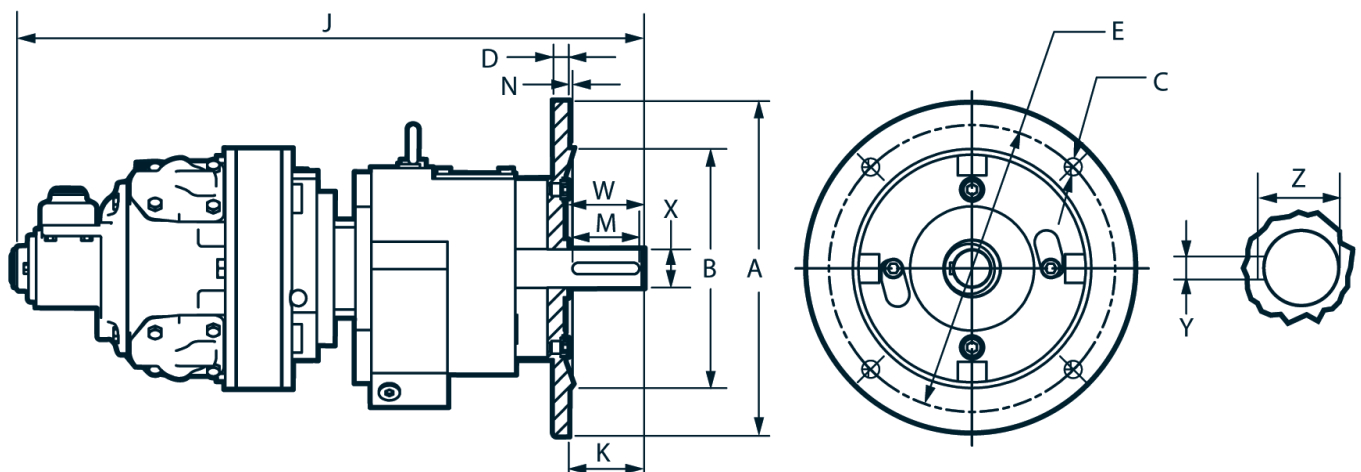
Detailed drawings and CAD models are available on request.

GEAR-MOTOR WITH BASE



| Rapport | A | B | C | D | E | F | G | H | J | L | M | P | R | T | W | X | Y | Z | Weight Kg. |
|---------------|--------|-----|-----|-----|-----|-----|-----|-----|-----|-----|-----|-----|------|----|-----|----|----|------|------------|
| 4.28-20.95:1 | 115+10 | 75 | 165 | 135 | 90 | 200 | 195 | 250 | 607 | 63 | 50 | 250 | 13.5 | 25 | 60 | 30 | 8 | 33 | 65.5 |
| 21.76-34.49:1 | 140 | 96 | 205 | 170 | 115 | 245 | 265 | 290 | 657 | 84 | 70 | 263 | 17.5 | 30 | 80 | 40 | 12 | 43 | 82.5 |
| 41.19-74.88:1 | 180 | 115 | 260 | 215 | 140 | 310 | 290 | 364 | 764 | 104 | 80 | 332 | 17.5 | 45 | 100 | 50 | 14 | 53.5 | 115 |
| 82.14-126.9:1 | 225 | 132 | 310 | 250 | 160 | 365 | 340 | 445 | 810 | 125 | 100 | 410 | 22 | 50 | 120 | 60 | 18 | 64 | 165 |

GEAR-MOTOR FLANGED



| Rapport | A | B | C | D | E | J | K | M | N | W | X | Y | Z | Weight Kg. |
|---------------|-----|-----|------|----|-----|-----|-----|-----|---|-----|----|----|------|------------|
| 4.28-20.95:1 | 250 | 180 | 13.5 | 15 | 215 | 607 | 60 | 50 | 4 | 60 | 30 | 8 | 33 | 65.5 |
| 21.76-34.49:1 | 350 | 250 | 17.5 | 16 | 300 | 658 | 80 | 70 | 4 | 80 | 40 | 12 | 43 | 82.5 |
| 41.19-74.88:1 | 350 | 250 | 17.5 | 18 | 300 | 743 | 100 | 80 | 5 | 100 | 50 | 14 | 53.5 | 114.5 |
| 82.14-126.9:1 | 350 | 250 | 17.5 | 18 | 300 | 803 | 120 | 100 | 5 | 100 | 60 | 18 | 64 | 164.5 |