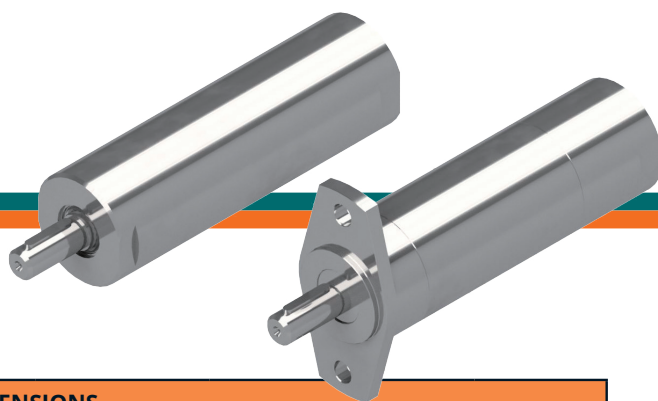


SERIES M25..... - HP 0,33 KW 0,25



PERFORMANCE AND DIMENSIONS

Model	Free speed Turns / 1'	Speed at maximum Power Turns / 1'	Maximum torque Power Nm	Couple at the cue nm	Stall torque Nm	Quote "L" mm	Weight Kg.	Consumption l/sec
	6,3 bar	6,3 bar	6,3 bar	6,3 bar	6,3 bar			
	HP 0,33	HP 0,33	HP 0,33	HP 0,33	HP 0,33			
M25N1	19200	9600	0.25	0.38	0.50	114	0.65	5
M25N1A	4400	2200	1.1	1.7	2.2	114	0.65	5
M25N1B	3300	1650	1.5	2.3	3	114	0.65	5
M25N1C	2080	1040	2.4	3.6	4.8	114	0.65	5
M25N1D	1070	535	4.3	6.5	8.6	145	0.85	5.3
M25N2	760	380	6	9	12	145	0.85	5.3
M25N2A	470	235	10	15	20	145	0.85	5.3

AVAILABLE VERSIONS

N - No lube
F - Flange fixing
A - Atex Certification

VERSIONS NOT AVAILABLE

R - Reversible

Lubrication: 2-3 drops/1' in continuous service
 4-6 drops/1' in intermittent service

Filtration: 64 µ o migliore

Radial load: 1100 N max

Axial load: 900 N max

Temperature

operating: da -20°C a +80°C

