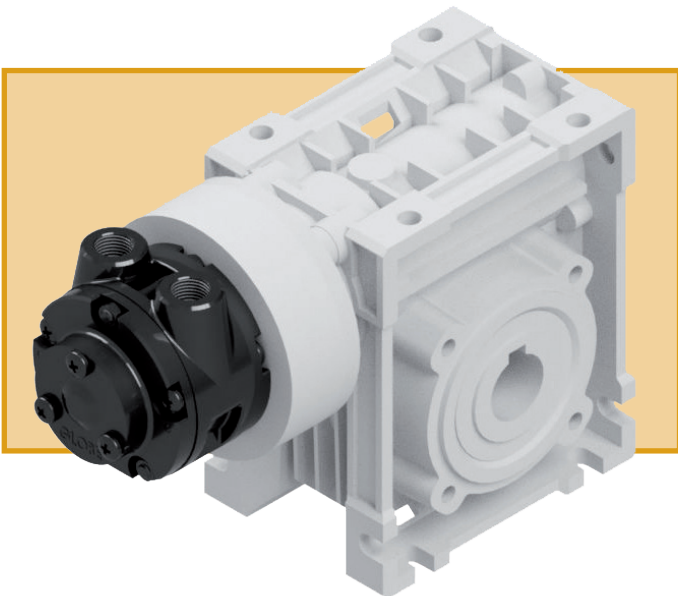


## SERIES M55 - 0,46 KW / 0,6 HP



PERFORMANCES AND DIMENSIONS																
Model	Speed RPM	Power KW			Min. starting torque Nm			Torque at max Power Nm			Consum l/sec			i	f.s.	Weight Kg.
		6 bar	5 bar	4 bar	6 bar	5 bar	4 bar	6 bar	5 bar	4 bar	6 bar	5 bar	4 bar			
M55CM030i7,5	400	0,32	0,26	0,19	4	3	2	5	4	3	10	8,4	6,8	7,5	1	2,5
M55CM030i15	200	0,32	0,26	0,19	6	5	4	10	8	6				15	1	2,5
M55CM030i30	100	0,27	0,24	0,16	8	7	5	17	15	10				30	1	2,5
M55CM040i40	75	0,27	0,24	0,16	11	9	7	22	20	14				40	1	3,5
M55CM040i50	60	0,25	0,22	0,16	13	10	8	26	23	17				50	1	3,5
M55CM050i60	50	0,25	0,22	0,16	14	11	9	31	25	20				60	1	4,5
M55CM050i80	37	0,23	0,18	0,14	15	13	10	38	31	24				80	1	4,5

The torque values indicated in the table refer to the wear resistance of the bronze crown for a theoretical duration of 10,000 hours with f.s. 1 and in ideal lubrication conditions.



**Lubrication:** 4-5 gocce/1' in continuous service  
9-12 gocce/1' in intermittent service

**Filtration:** 64 µ or better

**Noise:** 86dB

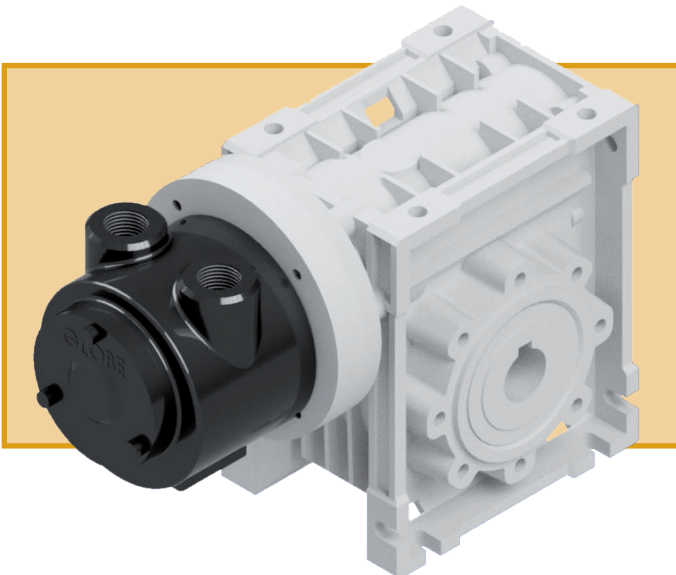
Note: Sound pressure values are measured at maximum speed and power, with an operating pressure of 5.5 bar. TSA recommends to connect the exhaust pipes to a suitable oil separator filter with incorporated silencer, in order to allow for sufficient lubrication without the room becoming saturated with polluted air.

## SERIES M250 - 1,9 KW / 2,72 HP



PERFORMANCES AND DIMENSIONS																
Model	Speed RPM	Power KW			Min. starting torque Nm			Torque at max Power Nm			Consum l/sec			i	f.s.	Weight Kg.
		6 bar	5 bar	4 bar	6 bar	5 bar	4 bar	6 bar	5 bar	4 bar	6 bar	5 bar	4 bar			
M250CM063i7,5	400	1,9	1,5	1,2	20	16	13	30	24	19	34,8	8,4 29,6	24,3	7,5	1	10,5
M250CM063i15	200	1,8	1,5	1,1	34	28	22	56	46	36				15	1	10,5
M250CM063i30	100	1,7	1,3	1,1	52	42	33	104	85	67				30	1	10,5
M250CM063i40	75	1,6	1,3	1	61	50	39	133	110	86				40	1	10,5
M250CM063i50	60	1,5	1,3	1	69	57	44	160	132	103				50	1	10,5
M250CM090i60	50	1,5	1,3	1	76	72	56	184	162	127				60	1	17
M250CM090i80	37	1,3	1,2	0,9	86	81	63	228	205	161				80	1	17

The torque values indicated in the table refer to the wear resistance of the bronze crown for a theoretical duration of 10,000 hours with f.s. 1 and in ideal lubrication conditions.



**Lubrication:** 4-5 gocce/1' in continuous service  
9-12 gocce/1' in intermittent service

**Filtration:** 64 µ or better

**Noise:** 84dB

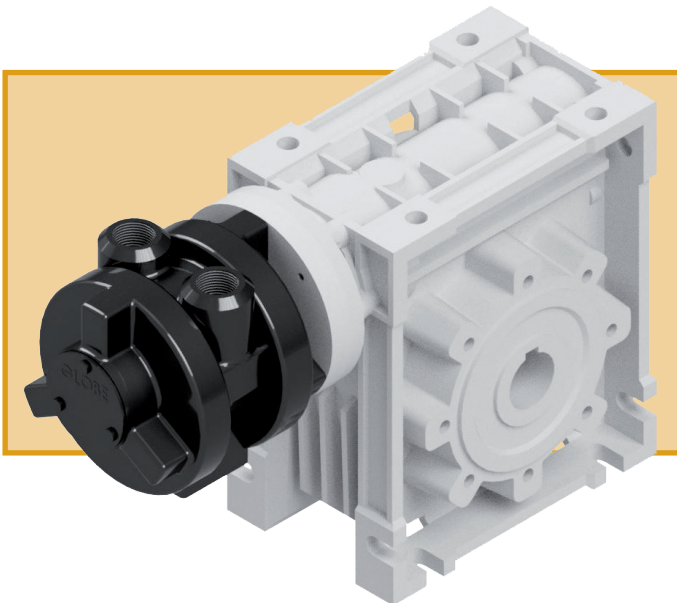
Note: Sound pressure values are measured at maximum speed and power, with an operating pressure of 5.5 bar. TSA recommends to connect the exhaust pipes to a suitable oil separator filter with incorporated silencer, in order to allow for sufficient lubrication without the room becoming saturated with polluted air.



**SERIES M410 - 3,4 KW / 4,6 HP**

PERFORMANCES AND DIMENSIONS																
Model	Speed RPM	Power KW			Min. starting torque Nm			Torque at max Power Nm			Consum l/sec			i	f.s.	Weight Kg.
		6 bar	5 bar	4 bar	6 bar	5 bar	4 bar	6 bar	5 bar	4 bar	6 bar	5 bar	4 bar			
M410CM063i7,5	400	3,8	3,1	2,4	38	31	24	59	48	38	62,2	54,1	46,1	7,5	1	14,5
M410CM063i15	200	3,7	3	2,3	64	53	42	113	93	73				15	1	14,5
M410CM090i30	100	3,6	3	2,3	104	86	68	219	184	141				30	1	21
M410CM090i40	75	3,5	2,8	2,2	128	106	84	281	232	182				40	1	21
M410CM090i50	60	3,4	2,7	2,1	146	120	95	343	282	221				50	1	21
M410CM110i60	50	3,3	2,7	2,1	175	145	114	406	334	262				60	1	43
M410CM110i80	37	3,1	2,5	2	205	169	134	513	423	332				80	1	43

The torque values indicated in the table refer to the wear resistance of the bronze crown for a theoretical duration of 10,000 hours with f.s. 1 and in ideal lubrication conditions.



**Lubrication:** 5-6 gocce/1' in continuous service  
10-12 gocce/1' in intermittent service

**Filtration:** 64 µ or better

**Noise:** 84dB

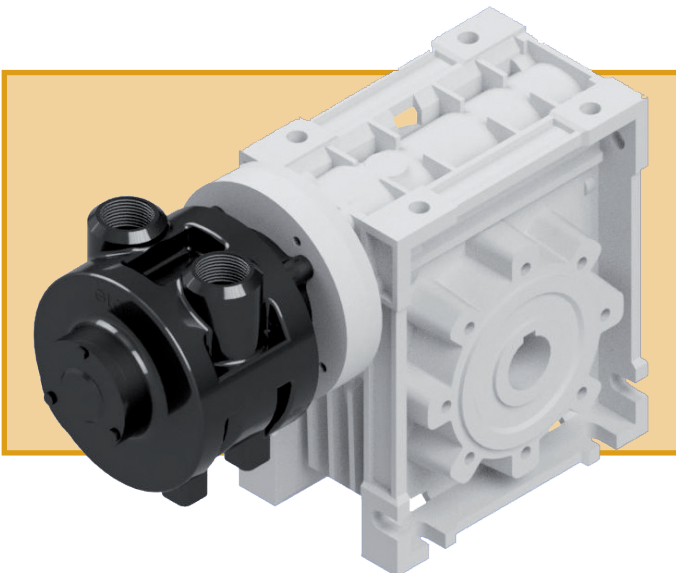
Note: Sound pressure values are measured at maximum speed and power, with an operating pressure of 5.5 bar. TSA recommends to connect the exhaust pipes to a suitable oil separator filter with incorporated silencer, in order to allow for sufficient lubrication without the room becoming saturated with polluted air.

## SERIES M620 - 5,1 KW / 6,94 HP



PERFORMANCES AND DIMENSIONS																
Model	Speed RPM	Power KW			Min. starting torque Nm			Torque at max Power Nm			Consum l/sec			i	f.s.	Weight Kg.
		6 bar	5 bar	4 bar	6 bar	5 bar	4 bar	6 bar	5 bar	4 bar	6 bar	5 bar	4 bar			
M620CM090i7,5	400	6,1	4,9	3,8	77	64	50	93	76	59	101,9	87,6	73,4	7,5	1	25
M620CM090i15	200	5,9	4,8	3,7	135	112	89	181	147	114				15	1	25
M620CM110i30	100	5,5	4,5	3,5	203	168	133	337	275	213				30	1	47
M620CM110i40	75	5,4	4,4	3,4	260	215	170	444	363	281				40	1	47
M620CM110i50	60	5,3	4,3	3,3	311	257	204	541	442	343				50	1	47
M620CM110i60	50	5,2	4,2	3,2	347	288	228	633	517	401				60	1	47

The torque values indicated in the table refer to the wear resistance of the bronze crown for a theoretical duration of 10,000 hours with f.s. 1 and in ideal lubrication conditions.



**Lubrication:** 6-7 gocce/1' in continuous service  
12-15 gocce/1' in intermittent service

**Filtration:** 64 µ or better

**Noise:** 84dB

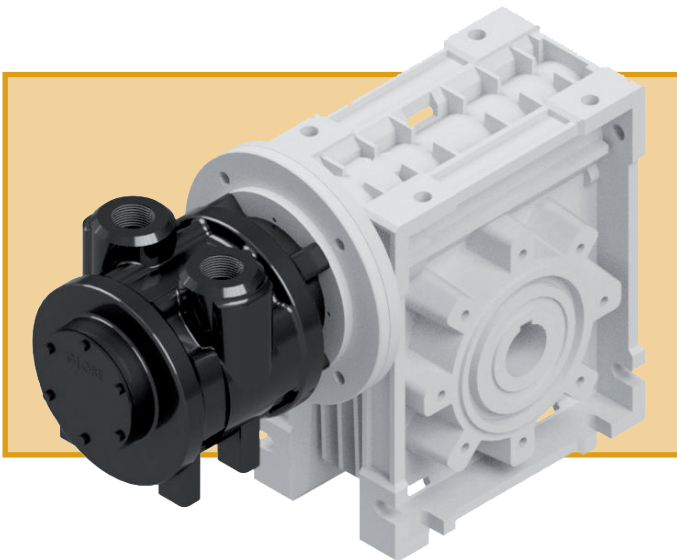
Note: Sound pressure values are measured at maximum speed and power, with an operating pressure of 5.5 bar. TSA recommends to connect the exhaust pipes to a suitable oil separator filter with incorporated silencer, in order to allow for sufficient lubrication without the room becoming saturated with polluted air.



**SERIES M1100 - 9,2 KW / 12,53 HP**

PERFORMANCES AND DIMENSIONS																
Model	Speed RPM	Power KW			Min. starting torque Nm			Torque at max Power Nm			Consum l/sec			i	f.s.	Weight Kg.
		6 bar	5 bar	4 bar	6 bar	5 bar	4 bar	6 bar	5 bar	4 bar	6 bar	5 bar	4 bar			
M1100CM090i7,5	320	11,1	9,1	7,1	155	129	102	212	174	136	132,5	116	99,5	7,5	1	35
M1100CM110i15	160	10,7	8,8	6,9	269	223	177	410	336	263				15	1	58
M1100CM110i20	120	10,6	8,7	6,8	353	292	232	541	444	347				20	1	58
M1100CM110i25	96	10,5	8,6	6,7	419	348	277	668	548	429				25	1	58
M1100CM110i30	80	10	8,2	6,4	409	340	270	765	628	490				30	1	58

The torque values indicated in the table refer to the wear resistance of the bronze crown for a theoretical duration of 10,000 hours with f.s. 1 and in ideal lubrication conditions.



**Lubrication:** 8-10 gocce/1' in continuous service  
14-16 gocce/1' in intermittent service

**Filtration:** 64 µ or better

**Noise:** 86dB

Note: Sound pressure values are measured at maximum speed and power, with an operating pressure of 5.5 bar. TSA recommends to connect the exhaust pipes to a suitable oil separator filter with incorporated silencer, in order to allow for sufficient lubrication without the room becoming saturated with polluted air.